

General Installation Guide FlamMap6

June 2022

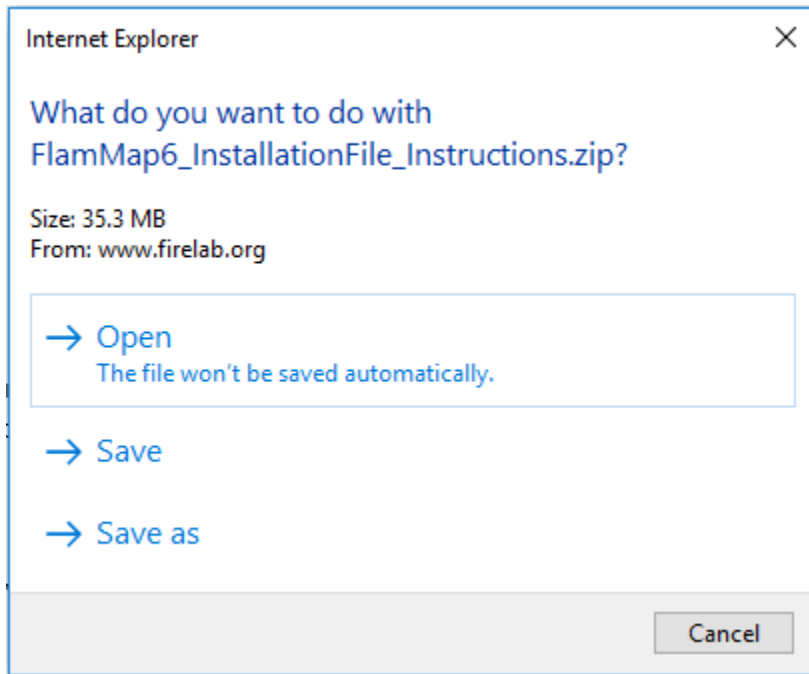
1. FlamMap62 is designed to run in a 64-bit Windows Operating System only.
2. The installation package for FlamMap is a common zip file and includes:
 - a. Program installation files,
 - b. General Installation guide and,
 - c. USFS Specific Installation Guide
3. In some instances, **Administrator Rights** may be required to properly install the program. Follow your respective agency protocols for installing the software.
4. **IF you are a USFS user and to facilitate the installation of FlamMap6 without the need to request assistance from the USFS Computer Helpdesk. Leave this document and follow the USFS Specific installation instructions document.**
5. You do not need to uninstall any previously installed versions of FlamMap6. The current install will overwrite and update the current installation for **FlamMap6 ONLY**. It will not erase any saved data, or FlamMap projects.
6. The default installation location for FlamMap6 is: **C:\Workspace\FlamMap6**. You can change this location. **HOWEVER**, you must ensure that any area you install the program has **Full Control and complete Read/Write access** or FlamMap6 will not run. Changing the default installation location **may also break the paths** to your any previous FlamMap projects. In most cases you should accept the default installation location.

For Questions Concerning the FlamMap6 Program Contact:


Charles (Chuck) W. McHugh
RMRS, Fire Sciences Laboratory
Missoula, MT
charles.mchugh@usda.gov
406.829.6953

Installing FlamMap6

Attempting to install from the web without downloading may or may not work depending on your individual security settings and what permissions are operational to you. Also, every browser may work differently on how it downloads and saves files to your computer. It is recommended that you download and save the program to your computer first. The installation zip file in most cases will be saved to the defaulted location for downloading files in your browser settings. Clicking on the web link in Internet Explorer will open the following window.



Select “**Save As**” and follow the subsequent prompts to download the zip file. Remember where you saved the file to. The final file size for the program should be approximately **36,173 KB**.

Name	Size
 FlamMap6_InstallationFile_Instructions.zip	36,173 KB

The installation files are zipped (compressed) files. Extract the files prior to installing them. There will be two files. **FlamMap_Setup.exe** and **FlamMap6.msi**

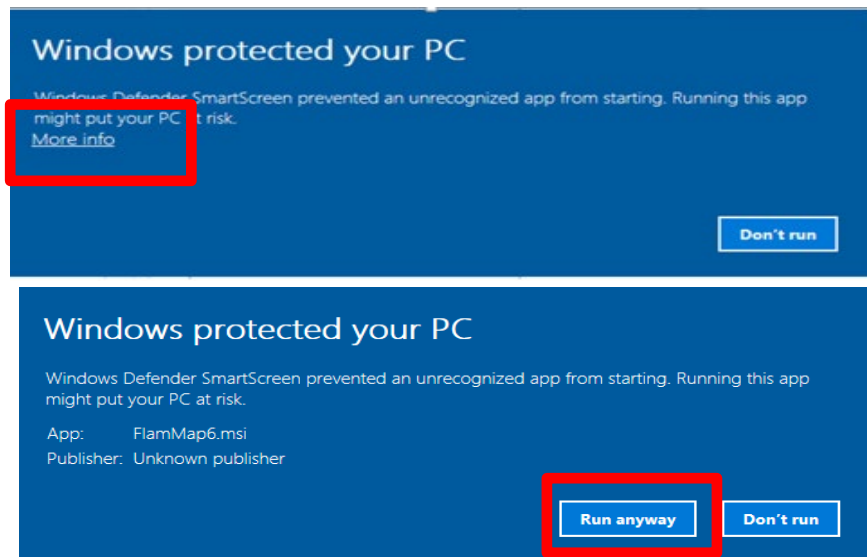
Name	Type
 FlamMap_Setup.exe	Application
 FlamMap6.msi	Windows Installer Package

Double-click the **FlamMap_setup.exe** file and then follow the prompts from there.

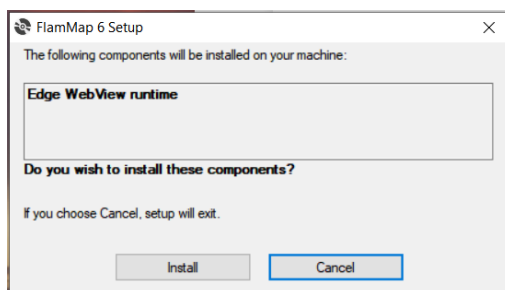
Depending on installation permissions and controls instituted by various IT departments you may be able to just Double-click on the **FlamMap_setup.exe** file and install. **It is recommended to ACCEPT THE INSTALLATION DEFAULTS.**

For USFS users please refer to the “USFS Specific Installation Document” included in the downloaded zip file.

Upon Install the following window may pop-up. Select **“More info”, “Run anyway”**

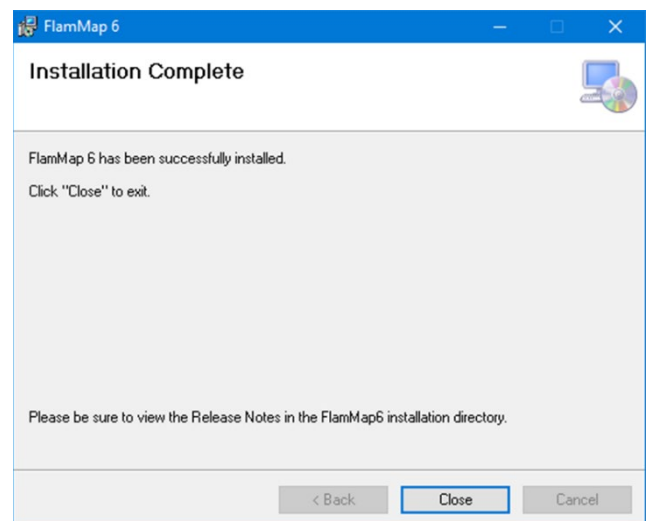
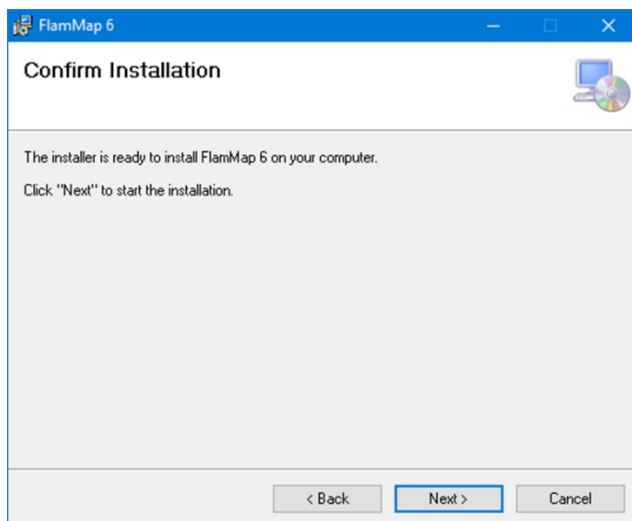
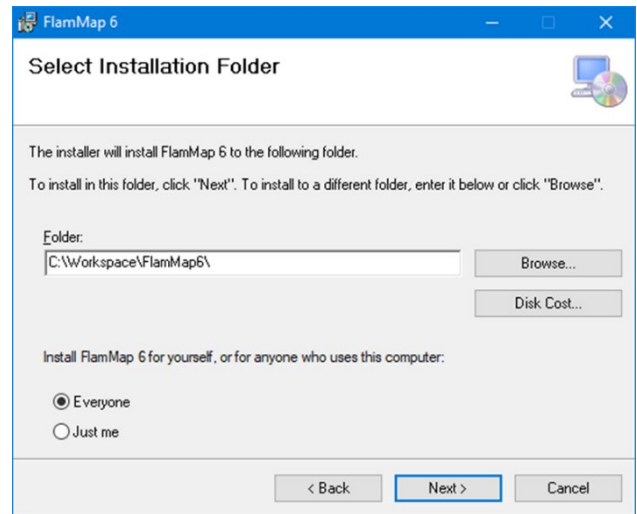
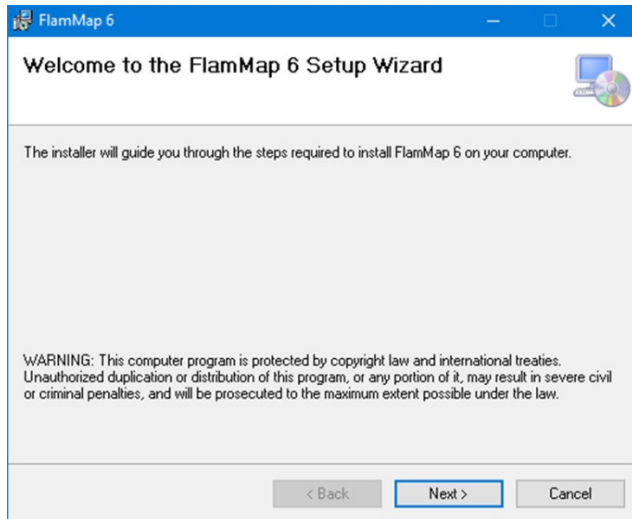


You may be asked to install Microsoft Edge WebView runtime package. If already installed on your computer, the installation package will skip this step. It should flash 2-3 install screens, then start the **FlamMap6 Setup Wizard**. WebView is used to support an interactive data download utility within the FlamMap application.



Once the FlamMap application starts to install you should see the following standard Windows Installation pop-up windows.

Click **Next** on all. **It is recommended to accept the defaulted installation folder.** Once the installation is complete click **Close**.



Recommended to install to the defaulted location.

- **DO NOT** install the program on a server location that will be accessed across a network.
- **DO NOT** install in Program Files or Program Files (x86) [Often blocked to write temporary files to]
- **DO NOT** install on Desktop [creates long pathname issues]
- **DO NOT** install in My Documents [creates long pathname issues]

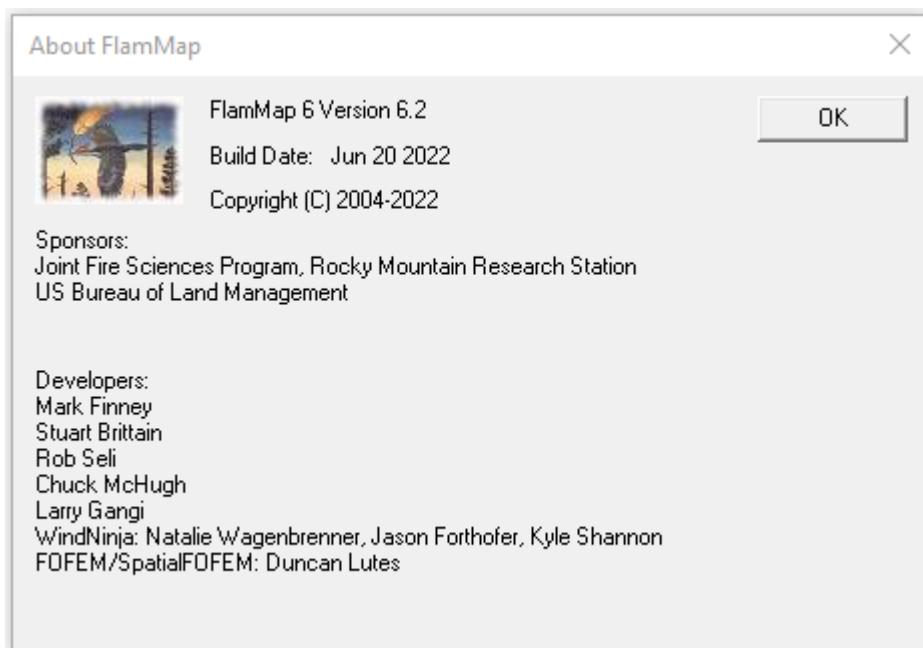
IF you choose to install the program in a Different location it must be to an area with Read/Write Access as FlamMap requires an area that it can write and store temporary files to.

FlamMap General Information

General Information about the application and how to access the Help is discussed here. Open up FlamMap and look at some general information about the application. On the **Menu** bar click the **Help** button. This will open the following drop-down menu of options.

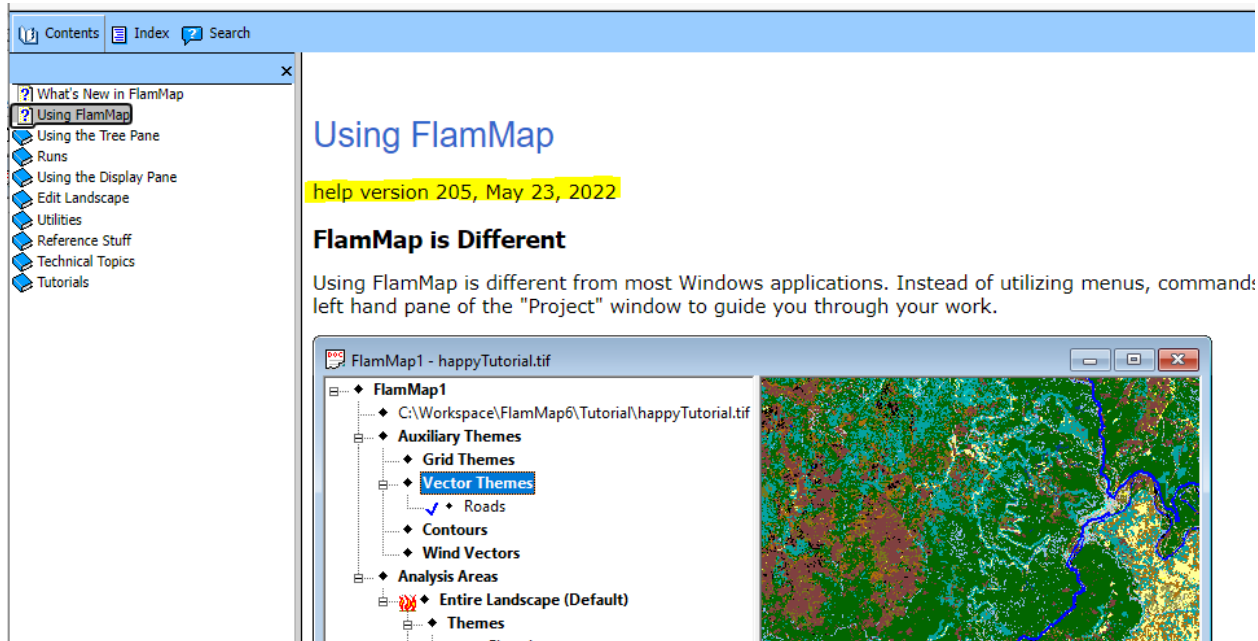


The **About FlamMap** and will display the following information. This will provide you information regarding the version you are using and the build date. You may be asked for this information during troubleshooting issues with FlamMap. **The current Build date for FlamMap is June 20, 2022**



FlamMap Help

The **Help** in FlamMap exists in the program as an embedded and content linked **Help** that can be opened separately or accessed by clicking on any of the **Help** buttons from any FlamMap dialog screen which will take you to that specific location of the **Help**. When you first access the **Help** file the screen will look like the following.



- Selecting **What's New in FlamMap** will provide a general list of updated and new features within the program.
- Selecting the **Using FlamMap** will display the Help file Version Number and its current date.
- Be sure to go through the following sections: **Using FlamMap**, **Using the Tree Pane**, **Tutorials**, **Runs**, **Using the Display Pane**, **Utilities**, **Edit Landscape Books** as they all contain useful information on using FlamMap. The **Reference Stuff** section goes into detail about specific topics.

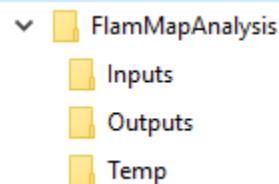
If you have an active internet connection, you can access the **Help**. This new version and delivery method of the **Help** allows for a living document that is continually being updated with new information being added. The Current Help File Version and Date will be visible as well. It can be accessed from the Menu bar **Help > Help**. Selecting the online Help should open the Help System in whatever your default browser is.

Data File Management

While this seems rather remedial it is an important topic. With FlamMap and multiple runs you can generate a lot of outputs and depending on your landscape size, data spatial resolution these can be many, many megabytes to GB in size! File management and organization is important.

Some items to consider.

1. **DO NOT** create your project folders on your **Desktop**, yes, it is the Easy Button! But it tends to create a long pathname (c:\users\cmchugh\documents\ for example) to your folder often including special characters like % signs that you do not see.
2. **DO NOT** create your project folder in **My Documents**. Same as above with creating your work area on your **Desktop**.
3. **DO NOT** use, access, or acquire data across a Network. Always keep the program and data installed locally on your computer. Certainly, back up your data onto a network or other reliable storage area/device. But the program is not designed specifically to operate in this manner.
4. Safest to create a workspace on the largest drive on your computer and do all your work there. Make sure you have read/write access to these areas.
5. You can use an external type hard drive as your workspace/work area. A word of caution here though. If you use multiple external drives and attach them in a different order the drive letter designations may change every time. It is recommended to use Windows Disk Manager and assign a specific drive letter. ***You should only attempt this if you are confident in this as there can be unintended consequences of overwriting standard Windows System folders such as the C:\ drive or other drive assignments assigned by your organization or agency.***
6. Keep pathnames and filenames short.
 - a. Follow old style DOS naming conventions
 - b. Don't use spaces use underscores, e.g., _
 - c. Don't include special characters such as @, #, \$, %, &, *, /, \
 - d. Example Workspace might be: C:\WorkSpace\FlamMapAnalysis\ with several subfolders underneath it. For example:



- e. Because of the ability to use long filenames and characters (see item c above) if you use ignition files, barrier files, or other geospatial information from the WFDSS or IFTDSS application it is recommended to rename and shorten them prior to use in FlamMap.
7. Use FlamMap's **Archive** function to save and backup and share your FlamMap projects. **IT IS the ONLY** method to ensure that all your settings and data will be stored and shared with the project. Currently, the one exception to this is **Landscape Edit Rules**. Those are currently not saved with the FlamMap Archive file.